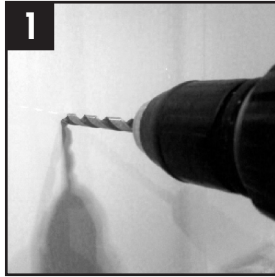
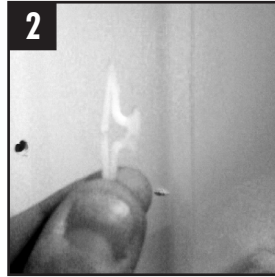


IMPORTANT NOTE

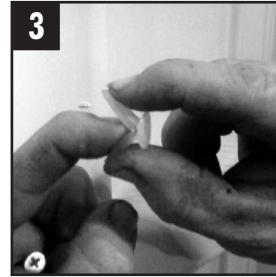
This door is designed to operate under normal use conditions. Any forceful or strenuous use could cause the door or fiberglass to fail resulting in possible injury or even death. Cardinal Shower is not responsible for accidents due to improper installation or excessive forceful use.



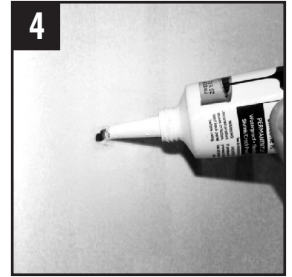
1 Drill hole in fiberglass using 5/16" drill bit.



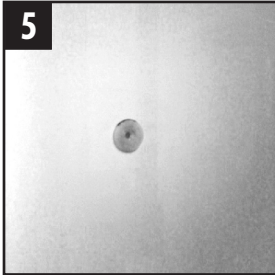
2 Take the toggler (pack comes with 8).



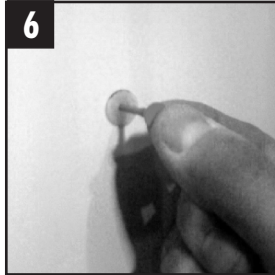
3 Fold legs together by using finger to push in back of toggle



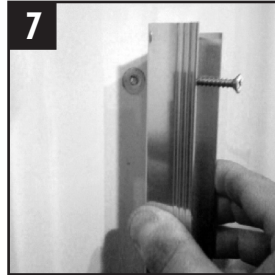
4 Add some silicone to the hole and then insert the toggler.



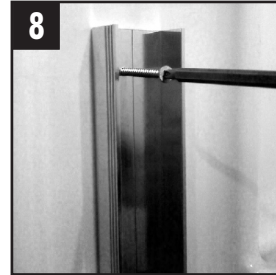
5 You might need to use a rubber mallet to gently tap into the hole until it is flush against fiberglass.



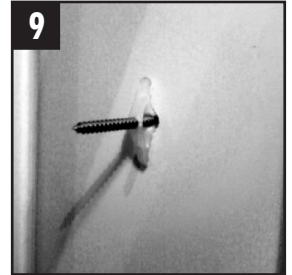
6 Push red setting pin into hole to "activate" or "set" the toggler (listen for the "click"), then remove the setting pin.



7 Line wall jamb hole up with the toggler and insert the provided screw.



8 Tighten down, but do not overtighten.



9 This is what the toggler looks like from the back side.